



# Young Regulator Co.

7100 Krick Rd • Walton Hills, OH 44146  
 P: 440-232-9700 • F: 440-232-8266  
[www.youngregulator.com](http://www.youngregulator.com)

CVR-HP Submit Apr. 2019

## Model CVR-HP-xx High Pressure Constant Volume Regulator 0.6 - 2.4 InWC

### Application and Design

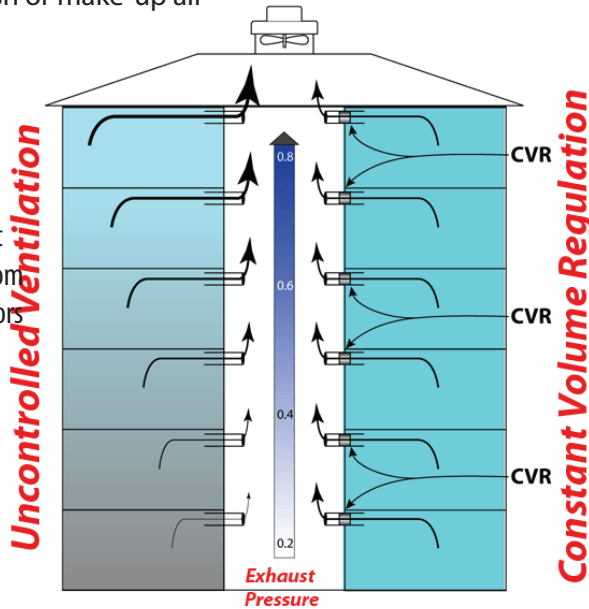
Constant Volume Regulators (CVR) are designed to save significant amounts of energy and money by limiting airflow, preventing over-ventilating or over-serving a space. They are engineered with a specifically shaped free area and a wing-like damper (Aero-Gate) ①. When pressure increases, the increased flow causes the Aero-Gate to rise and block more of the free area. The CVR is adjustable. ② Each size unit can provide a range of flow profiles over its rated pressure range.

The product is precision molded of fire-resistant ABS plastic. They have been used in Europe for years and are starting to gain a larger market in North America as well. Constant Volume Regulators may contribute to meeting coveted USG BC Leed Building Certification.



### Applications:

- Limit over-conditioning due to ductwork limitations
- Limit or equalize exhaust
- Automatic Air Balancing
- Overcome stack effect in tall buildings
- Regulate fresh or make-up air

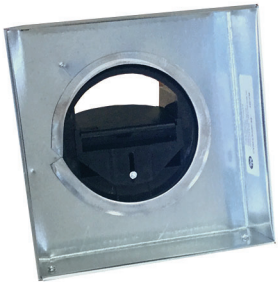


PRODUCT PARAMETERS		
Pressure Range	0.6 to 2.4 InWC	
Accuracy	Desired Set point +/- 10%	
SIZE INFORMATION		
DIAMETER	Flow	Depth
3	15-55	2.3"
4	15-55, 60-90	2.3"
5	15-55, 60-90, 115-180	3.5"
6	5-55, 60-90, 115-180, 200-300	3.5"
8	55-105, 105-180, 200-300, 350-480	3.5"
10	105-180, 200-300, 350-510, 530-720	3.5"
STANDARD CONSTRUCTION		
Construction	Molded UL94 VO ABS Plastic	
Safety Ratings	UL2043 Flame and Smoke European Fire and Smoke M1	
Mounting	Friction fit - Rubber Gasket	
Color	Black	

Diameter	CFM Set Point	Quantity	Orientation	Notes
			S / R	
			S / R	
			S / R	
<b>PROJECT</b>				<b>LOCATION</b>
<b>CONTRACTOR</b>				<b>DESIGN SPECIFIER</b>

**Sheet Metal Enclosures**

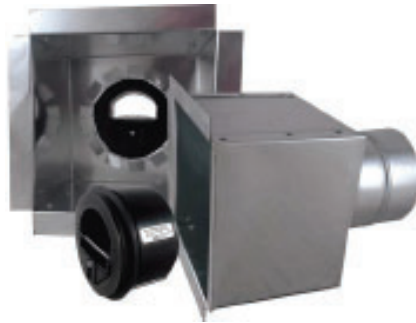
CVR-HP-xx is available factory installed in enclosures to accommodate grilles, fire and radiation dampers, or control dampers. Contact the factory for assistance.



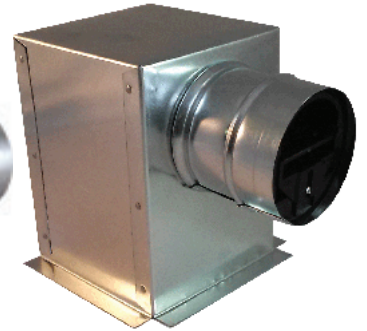
CVRF1-HP  
Duct insert



CVRF2-HP  
2" Register Box



CVRF5-HP  
Sidewall Enclosure



CVRF8-HP  
Ceiling Mount Enclosure

**High Pressure Constant Volume Regulators  
Performance Curves**

Specify a diameter and a flow for each part based on job requirements.

Performance Curves indicate flow through the part at a given pressure. To choose a part move across the chart to the appropriate static pressure. Move up the chart to the desired flow. Trace the best fit line to the left to find the adjustment scale, that will produce the desired flow.

