



**Young Regulator Co.**

7100 Krick Rd • Walton Hills, OH 44146

P: 440-232-9700 • F: 440-232-8266

[www.youngregulator.com](http://www.youngregulator.com)

Submit 270 – 1-10

**Model 270-896-LO**

*Bowden Remote Cable Control*

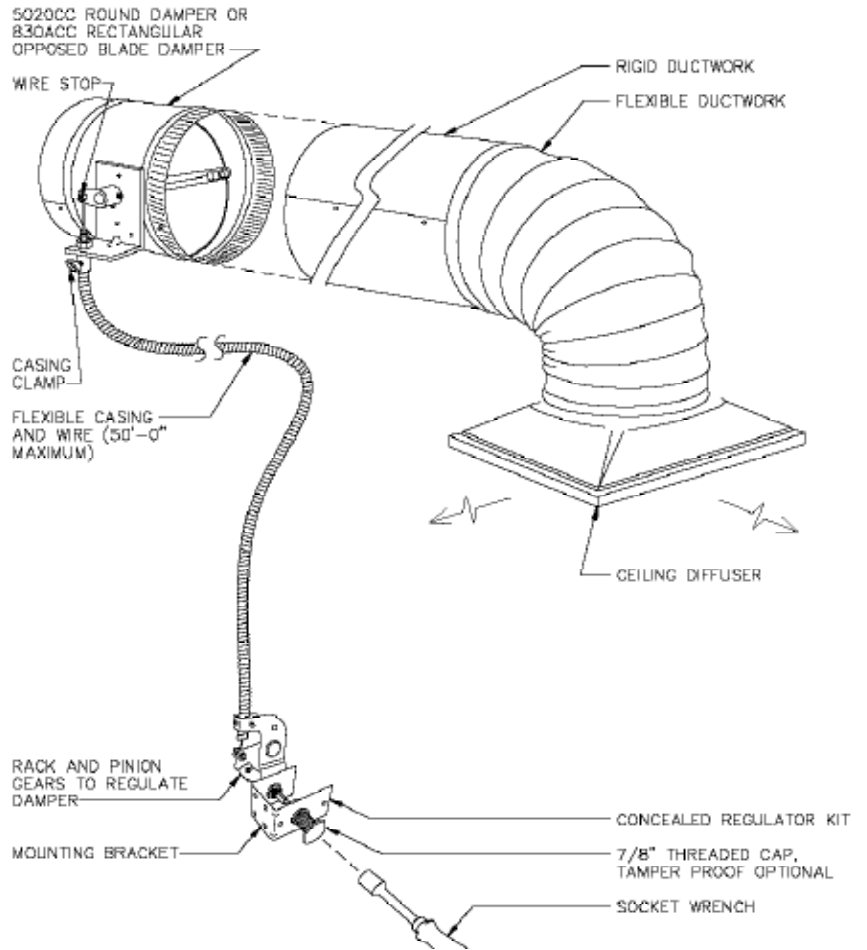
*Concealed Wall Regulator with 7/8" Threaded Cap*

**Application and Design**

Balancing dampers located in inaccessible spaces are now easily controlled with the Young Regulator Bowden Remote Cable Assemblies. Access is concealed in wall with the 270-896-LO. Access doors can be eliminated for architectural aesthetics.

A flexible casing and wire up to 50' long runs from a steel rack and pinion locking controller to a damper where the rotary motion of the rack and pinion controller is converted to a push-pull motion with a lever arm.

The 270-896-LO provides access through a 7/8" screw cap concealed in the sheetrock wall. The rack and pinion controller is mounted on a convenient "C" bracket that fastens to a support stud behind the wall the ceiling. The bracket receives the threaded cap.



| STANDARD CONSTRUCTION                   |                         |
|---|-------------------------|
| Rack and Pinion                         | 14 ga. Galvanized Steel |
| C Bracket                               | 18 ga. Galvanized Steel |
| Threaded Cap                            | Zinc Plated Steel       |
| 1/2" - 13 Pem Nut Receives Threaded Cap |                         |

| ACCESSORIES  |
|--|
| Controlled w/ model 030-12 Wrench  |
| BCW - Bowden Casing and Wire - ordered separately by the foot or in bulk |
| Fasteners by others  |

| QUANTITY | MODEL | OPTION | NOTES |
|----------|-------|--------|-------|
|          |       |        |       |
|          |       |        |       |
|          |       |        |       |

|                   |                         |
|-------------------|-------------------------|
| <b>PROJECT</b>    | <b>LOCATION</b>         |
| <b>CONTRACTOR</b> | <b>DESIGN SPECIFIER</b> |