



Young Regulator Co.

7100 Krick Rd • Walton Hills, OH 44146

P: 440-232-9700 • F: 440-232-8266

www.youngregulator.com

Submit 895 – 1-10

Model 895, 896, 900 Series

Splitter Damper Hardware

895 Worm Gear Regulators

Series 895 worm gear regulators can be used to operate air extractors or splitter dampers made by other manufacturers. All 895 parts are made of heavy gauge zinc plated steel, except the worm gear which is machined aluminum. The shaft is 1/4" round, reduced at the end to 3/16" square. 895 regulators are all operated by our 030 socket wrench, available separately in the following lengths: 12", 24" and 36".

- **895A** has both connecting link and pivot joint for easy operation of air extractors and splitter dampers.
- **895B** is similar to 895A but has no connecting link or pivot joint.
- **895C** has neither connecting link nor pivot joint but includes an angle bracket which allows this unit to be installed in almost any location.

896 Concealed Air Split Regulators

896 concealed air split regulators contain all the hardware necessary to operate other manufacturers' splitter dampers in a vertical position from the ceiling line. Hinge and blade must be supplied by others. 896 has an inconspicuous 7/8" cover plate which is zinc plated for easy painting. The plate has a spring clip which presses into the pipe (see illustration) and allows a 1" adjustment, as well as a 1/8" flange which conceals the joint between the pipe and plaster or acoustical material. Unless otherwise specified, 896 comes with a 6" connecting rod and a 12" length of 3/8" pipe which may be cut off to the desired length in the field. Extra connecting rod and pipe are available by the foot. 896 regulators are all operated by our 030 socket wrench.

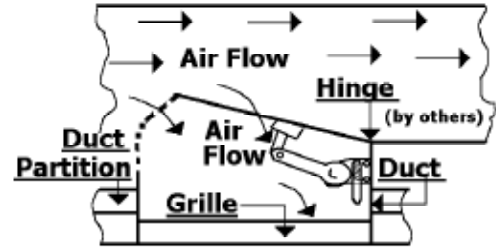
- **896C** is that portion of the unit below the duct and can be used together with the Young 1200 right angle worm gear regulator to operate a round or rectangular damper.

Note: Many 896 parts can be purchased separately to create custom units which meet specific requirements. Please call the factory for information.

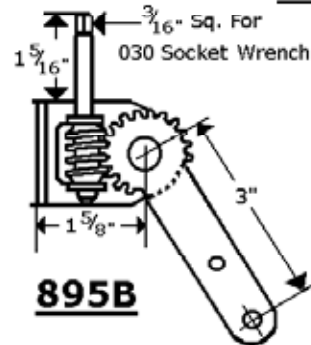
900 Air Split Regulators

900 air split regulators come with all the necessary hardware, including 3/8-16 brass rod, to operate splitter dampers, and are supplied with a 401 3/8" Valcalox regulator. The 900 is operated by an 09 crank and an 04 wrench, both available separately. The 900 is available in lengths from 6" to 72", in increments of 6".

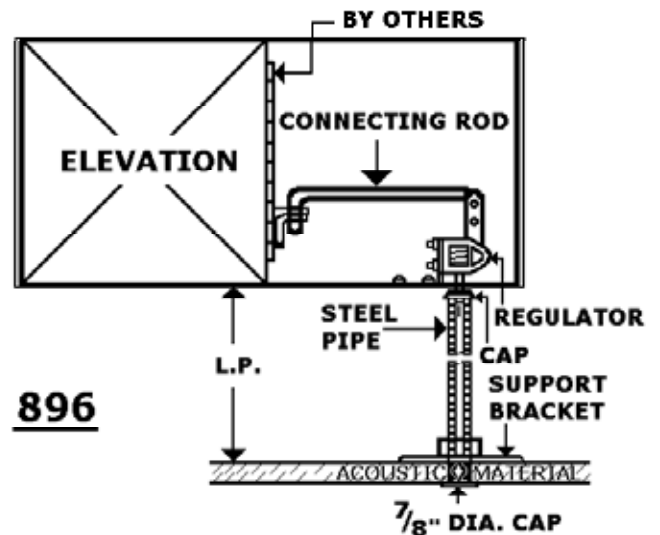
900A air split regulator is similar to 900 except that it does not include 3/8-16 threaded brass rod.



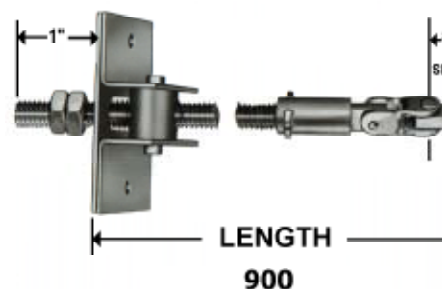
895A



895C Cross Section



896



LENGTH

900