

3095 Rectangular Static Pressure Barometric Relief Damper

Young series 3095 Rectangular Barometric Damper is used to automatically bypass excess air when increases in duct static pressure occur due to closing of zone dampers. Various relief air control settings are easily accomplished by simple adjustment of an integral weighted control lever. 3095 Barometric Relief Dampers are recommended for systems up to 0.5" static pressure. For higher pressure systems use models 3092 and 4092 motorized bypass dampers.

FEATURES

- Fast, simple installation.
- Heavy duty extended aluminum frame and galvanized steel construction for long corrosion-resistant life.
- Easy adjustment of weighted control lever.
- Oil impregnated bronze bushings and steel shaft for smooth and quiet operation.
- Mounting plate provided for slip-in installation in the side of the duct.
- Heavy duty gasket for damper blade.



OPERATION

Model 3095 damper operates automatically to relieve excess air in duct systems through the use of an integral counter-balanced weighted control lever. The weight can be moved in either direction along the entire length of the lever to allow the damper to open only when necessary.

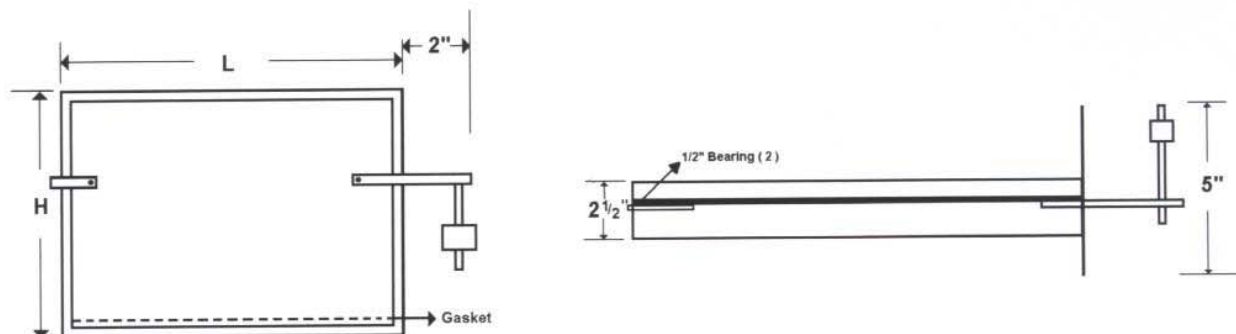
OPTIONS

Additional weights for control lever.

AVAILABLE SIZES

Standard sizes range from 12" x 8" through 24" x 12". Please contact the factory for intermediate and larger sizes. The 3095 damper is manufactured 1/8" under duct size.

Size (w x h)	CFM	Size (w x h)	CFM	Size (w x h)	CFM
12" x 8"	1000	20" x 8"	1600	24" x 8"	1800
12" x 10"	1200	20" x 10"	2000	24" x 10"	2400
12" x 12"	1400	20" x 12"	3000	24" x 12"	3200



YOUNG REGULATOR COMPANY
20910 Miles Parkway • Cleveland, Ohio 44128
(216) 663-5646 • Fax (216) 663-1830

INSTALLING STATIC PRESSURE BAROMETRIC RELIEF DAMPER (BRD) (Refer to Fig. 1)

IMPORTANT

Secure BRD by inserting mounting screws through the mounting plate, not the top, bottom, or back of the damper.

1. Select a BRD location near the end of an air duct run, far from the heating and cooling equipment, and close to a return air duct. Allow room for the counterweighted control arm swing radius.
2. Remove a 2-1/2" section of air duct at the selected location.
3. Slide the BRD into the air duct.
4. Secure the BRD mounting plate to the air duct using sheet metal screws provided.

ADJUSTING THE BAROMETRIC RELIEF DAMPER (BRD) WEIGHTED CONTROL ARM

Zone Systems are designed to operate when all zone dampers are open. When one or more zone dampers close, static pressure in the system increases, resulting in increased air turbulence, noise, vortexing, and air velocity.

The BRD compensates for these changes by automatically opening and dumping excess air volume from the system. The BRD is a free-swinging, automatic damper with an adjustable control arm. Adjust the control arm so when the system is operating and all Zone Dampers are open, the BRD is closed; as Zone Dampers close, increased air volume opens the BRD and dumps excess air volume from the system.

1. Set all thermostats to HEAT.
2. Turn zone one thermostat setting 10 degrees F above room temperature.
3. Set the control arm weight at the bottom of the control arm. BRD should remain closed.
4. Begin moving the control arm weight higher on the control arm until the BRD just opens.
5. Back the control arm weight down the control arm so the BRD just closes.
6. Return all thermostats to the desired settings.

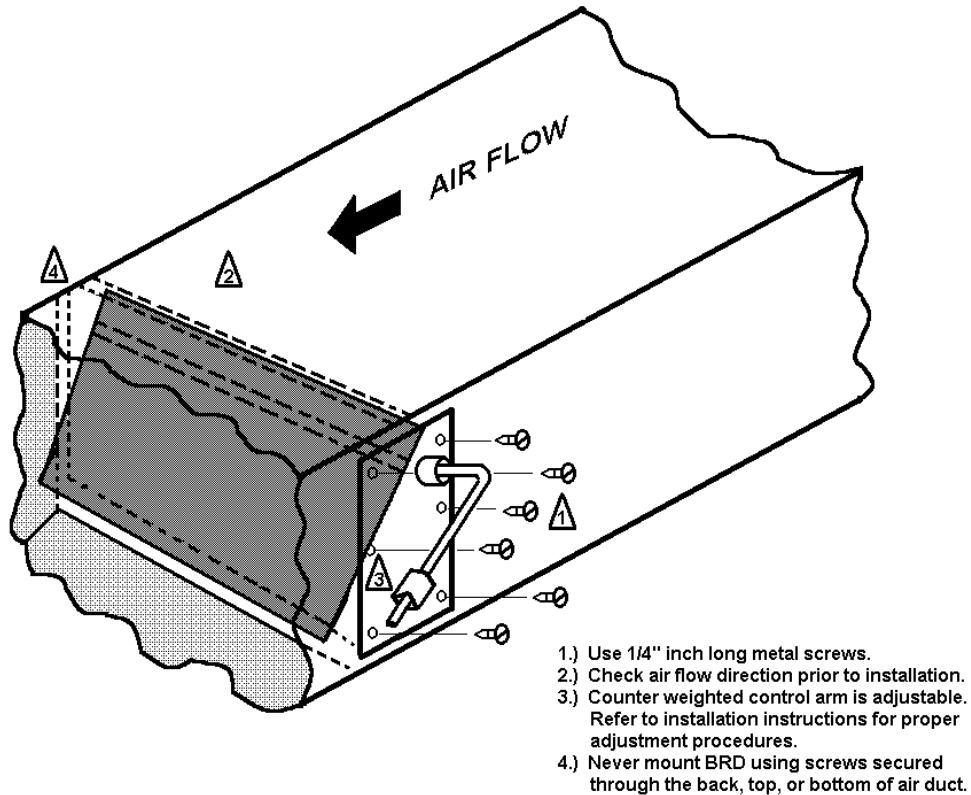


FIG. 1 – INSTALLING STATIC PRESSURE BAROMETRIC RELIEF DAMPERS